

Oct
2020

B.Tech. Program in Electrical Engineering

Department of Electrical Engineering
IIT Jodhpur



New broad-based curriculum and flexible program structure

Balance of theoretical foundations, hands-on, and experiential learning

Emphasis on design-oriented thinking, creativity, and life-long learning

Capability-linked Minor, Interdisciplinary, and Department-specific Specializations

Skillset targeted towards emerging technologies like 5G & Beyond Communication, Industry 4.0, & Smart City Technologies

Prepares students to compete effectively in a world of rapid technological advancements

Option to pursue entrepreneurship & industry collaboration through engineering innovation

Startup ecosystems to translate ideas into business models (Tinkering Lab, Technology Innovation & Startup Center, & Research Park)



The vision of the Department is to develop a world-class teaching and research atmosphere by excelling in fundamental knowledge and applications of Electrical Engineering through curricular and co-curricular activities.

To accomplish this, the Department offers an undergraduate program in the broad discipline of electrical engineering, with embedded capability-linked specializations, for enabling the students to pursue a chosen career path.



ee.iitj.ac.in



head_ee@iitj.ac.in

Features of 4-Year B.Tech. Program in Electrical Engineering

Option 1: Regular B.Tech.

Option 2: B.Tech. with Specialization

Cyber-physical systems
Communication Engineering
Intelligent Communication & Networking
Visual Computing
Sociodigital Reality
Artificial Intelligence of Things
VLSI Systems
Nano & Flexible Electronics
Smart Grid
Engineering Innovation
Robotics & Mobility Systems
Artificial Intelligence
Smart Healthcare

Option 3: B.Tech. with Minor in Entrepreneurship / Management

Option 4: Convert into 5-year B.Tech. + M.Tech. in

Sensors & Internet of Things (SIoT)
Cyber Physical Systems (CPS)
Communication Engineering Discipline
Signal Processing Discipline
VLSI Systems Discipline
Interdisciplinary Specializations
Entrepreneurship

Option 5: Convert into 5-year B.Tech. + M.B.A. Dual Degree

Unique Features of the
B.Tech. (EE) Program



Oct
2020

B.Tech. Program in Electrical Engineering

Department of Electrical Engineering
IIT Jodhpur



Unique Features of the
B.Tech. (EE) Program



Departmental Specialization Tracks



5G & Beyond Communication

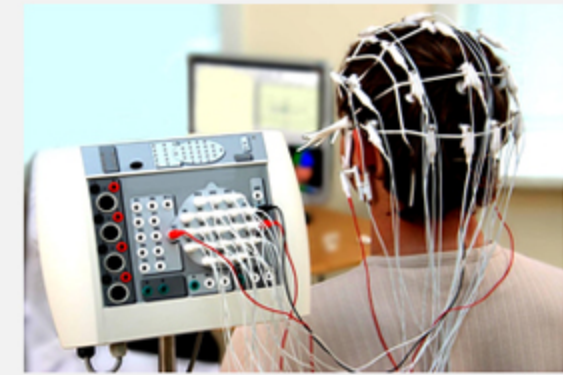


PXIe Communication Setup

Communication & Microwave Lab
Wireless Communications & Navigation Lab



Signal Processing & Interpretation



EEG Machine

Signal Processing Lab
Image Processing & Computer Vision Lab



VLSI Systems



Chip Fabrication

Electronics Lab
Electronic Circuit Simulation & VLSI Systems Lab

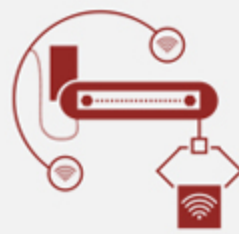


Smart Grid



Real-time Grid Simulator

Microgrid & Real-time Simulator Lab
Power Electronics Lab, Energy Conversion & Systems Lab



Cyber-Physical Systems

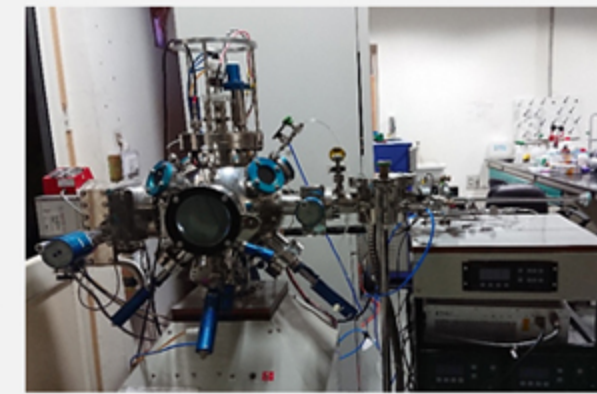


Helicopter Emulator

Cyber-Physical Systems (CPS) Modelling Lab
Control & Computing Lab



Nanoelectronics & Quantum Devices

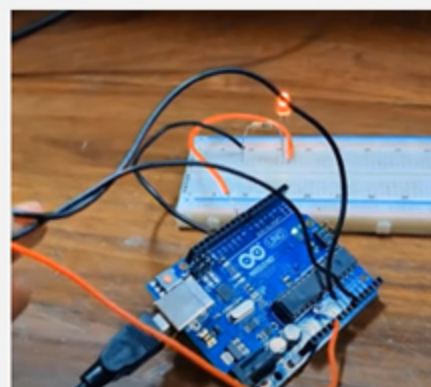


RF Multi-target Sputtering

Device Fabrication Lab, Sensor Fabrication Lab,
Semiconductor Characterization Lab, SMDP Lab



Artificial Intelligence of Things (AIoT)



Sensor node for IoT

Internet of Things (IoT) Lab
Microprocessor & Embedded Systems Lab



Engineering Innovation



Product realization in
collaboration with industry



ee.iitj.ac.in



head_ee@iitj.ac.in