

॥ त्वं ज्ञानमयो विज्ञानमयोऽसि ॥



## CAMPUS SUSTAINABILITY PROJECTS (CSP)

Office of Infrastructure Engineering (OIE)

and

Center for Emerging Technologies for Sustainable Development (CETSD)

IIT Jodhpur

# SEE and HOLA Projects–CSP Implementation

Through

**The Office of Infrastructure Engineering**

And

**Center for Emerging Technologies for Sustainable Development**

(CETSD)

## **Horticulture and Landscaping (HoLa) Related Projects**

1	Development and maintenance of Horticulture
2	Smart Water Irrigation System
3	Installation of Plant Fiber Mincing Machine
4	Thatched Pathway Roofing-
5	Soil restoration
6	Waste Segregation at Source

## **Society, Energy, and Environment (SEE) Projects**

1	Electric Vehicle Popularization-- Battery Recharging Station
2	<b>Wetland Restoration and Design</b>
3	Digital Archiving of Flora and Fauna
4	Carbon and Water footprint of IITJ campus
5	Farmers Market
6	Energy Audit
7	Virtual connection of nearby village with doctors for Covid 19 awareness
8	<b>Natural Vegetation Spatial Analysis</b>

## **CASE 1: Waste Segregation at Source**



- Ceramic Khamba Composter
- Organic waste only
- Aesthetic



Wet Waste




E-Waste



Dry Waste



Sanitary Waste

- Medical waste, Personal Hygiene waste
- Optimal use of medical supplies 
- Separate box for unused medicine shall be placed
- Collected Medicines — deposited to hostel warden's office in consultation with medical staff



Generated compost  
Shall be used within  
pre-defined gardens  
of hostel

Electronic  
scrap  
components

Paper,  
Polybags,  
Plastics



Sent for Recycling

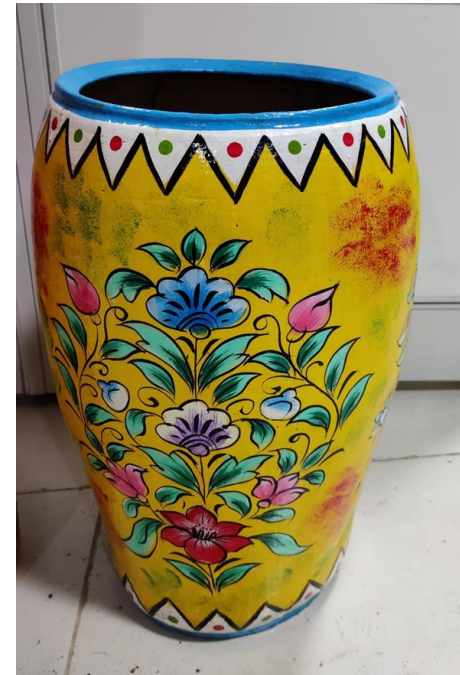


**Local  
Manufacturing**



**Products made by local potters at Jodhpur (used local clay and Bamboo)**

**Final  
Products**



**Khamba Composters**

**Clay Dustbins**



## Installation Locations of Clay Dustbins



Canara Bank ATM, Academic office



SBI ATM, LHC



ATM, Community Centre



OIE Office



Director's Office Building

## Installation Locations of Khamba Composter



Boy's Hostel G6



Girl's Hostel B2



Boy's Hostel B5



Director's Bungalow



Guest House

## CASE 2: OIE- SUSTAINABILITY & CONSTRUCTION WASTE MANAGEMENT





Thatched Roof at the School of Management and Entrepreneurship made out of locally available materials ---  
-----became a cynosure for many coming on to IIT Campus built out of Red stone over the last one year



## **CASE 3: Installation of Plant Fiber Mincing Machine**



Mincing Machine



Composter



Organic Waste



Sub-surface porous Vessel



## CSP Hola 3: Installation of Plant Fiber Mincing Machine

**Example of Waste Management, Artisan (Potter) Livelihood Generation and Water Management**

Sub Surface Mound Technology with a Compost Patch for Fertilization - Horticulture





## **CASE 4: Biodiversity App- Flora and Fauna Conservation**

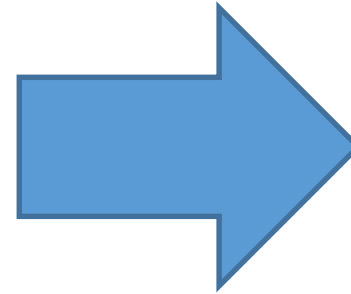


## **- Prakriti -**

A Biodiversity App for Flora and Fauna at IITJ



Scan the QR Code for downloading the app directly on your mobile



*Prakriti 1.1:  
Scan the QR code*

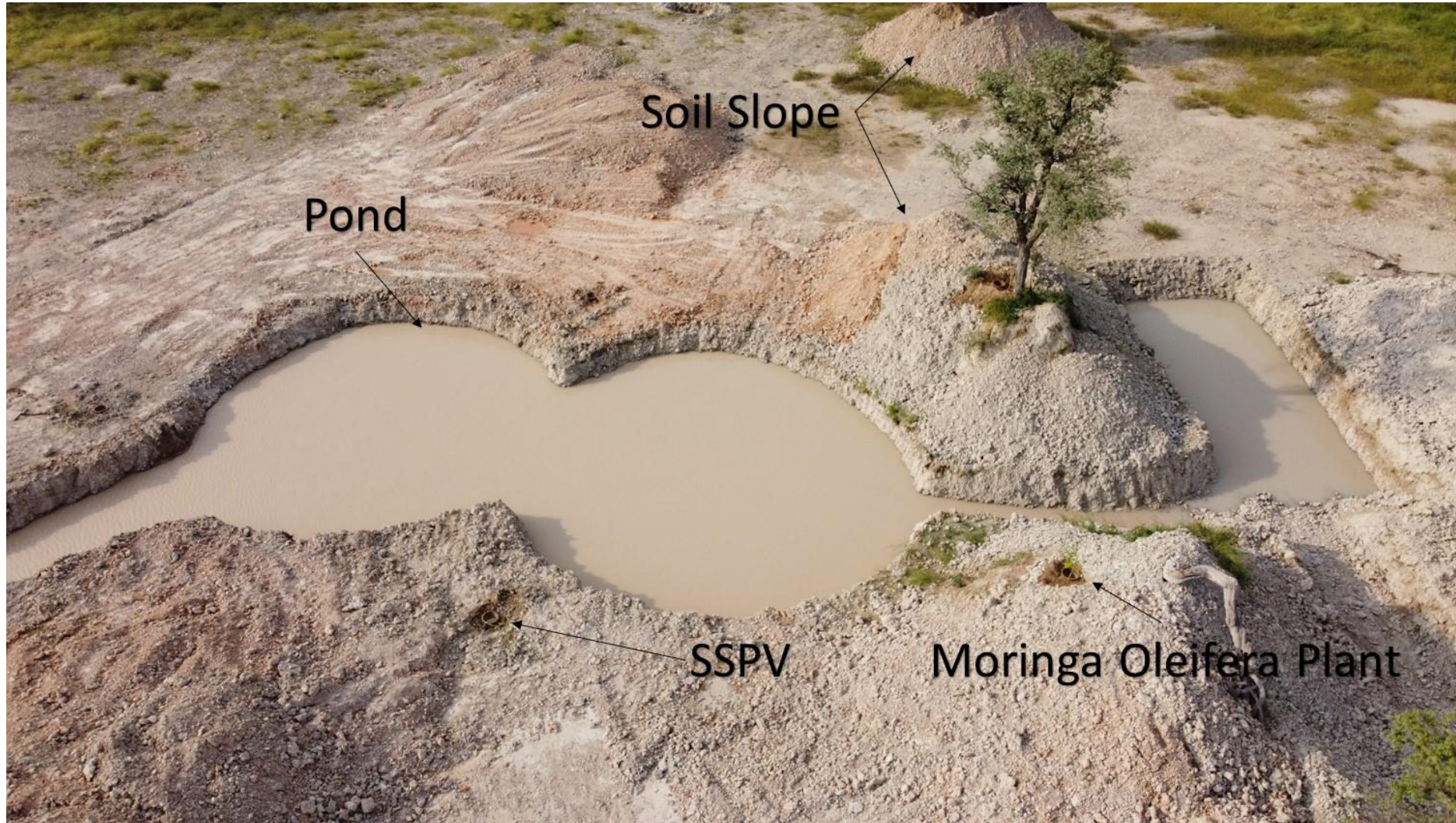


For more information: please write to  
[suchetana@iitj.ac.in](mailto:suchetana@iitj.ac.in)



## **CASE 5: Wetland Restoration**

Removal of Construction waste is the responsibility of the PMI through the contractor. Over the last year we removed more than 750 trucks of waste. However, still many waste left. One major problem is the local **MUDD soil** which also surfaced and looking like boulder or constructional waste.



**MUDD soils became slopes and shores of the wetland designed below out of *local traditional Talab Design knowledge among the Gajdhar Communities***

[Play Drone Video](#)



## **CASE 6: Soil Restoration**





**Thank You for the Team Effort of our IIT Jodhpur Administration, OIE And Swachatta Pakhwada Team , Office of Students for encouraging students**