

## **IITJ WLAN configuration steps for Android User**

Android users need to follow the configuration procedure below to use the IITJ\_WLAN Wi-Fi facility in the campus.

Network SSID: IITJ\_WLAN

Security type: WPA2/WPA3 Enterprise / 802.1x EAP EAP

method: PEAP

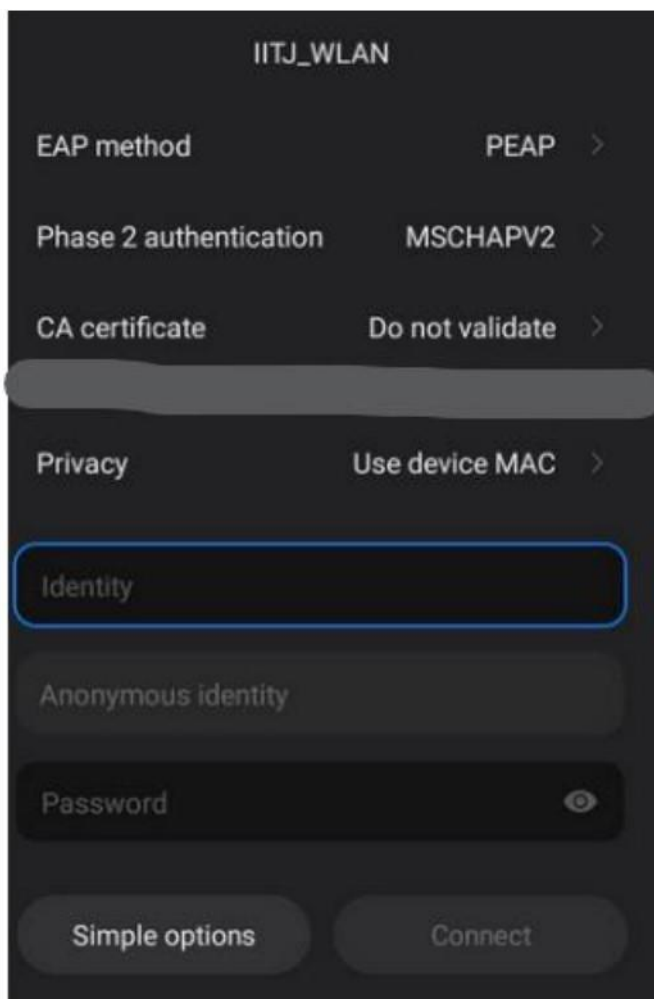
Phase 2 authentication: MSCHAPV2

CA Certificate: Do not validate (If your device not supported then Follow the steps on page 2 of this pdf

Identity: (Internet access ID)

Anonymous ID: leave it blank Password:

(Internet access password)



At last, click on the connect to access the internet.

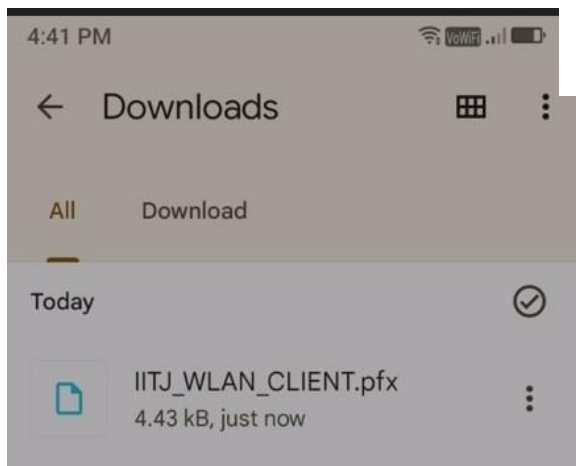
## “CA Certificate: Do not validate”

In some higher version of android CA certificate is required and there is no option of “Do not validate”. You need to download the IITJ WLAN client certificate via following link.

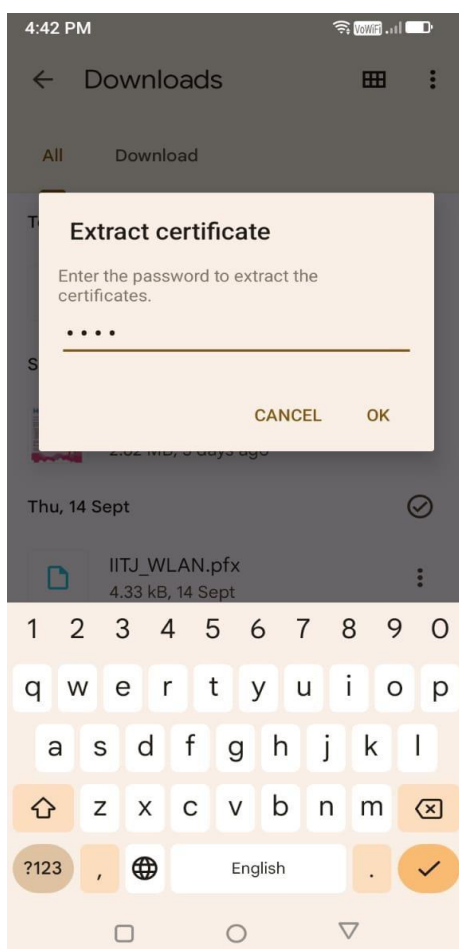
[https://drive.google.com/file/d/1rjTBValxR\\_6jElvGDzGYZH13ye7o-VBL/view?usp=drive\\_link](https://drive.google.com/file/d/1rjTBValxR_6jElvGDzGYZH13ye7o-VBL/view?usp=drive_link)

This link is accessible through IITJ email ids only.

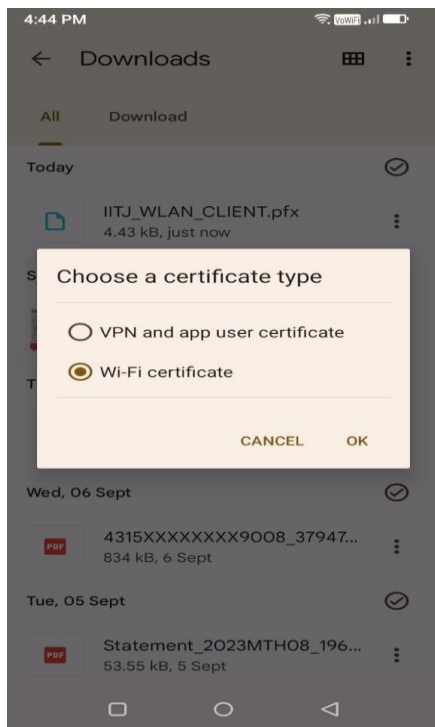
Go to your device’s download folder and look for the IITJ\_WLAN\_CLIENT.pfx certificate to install.



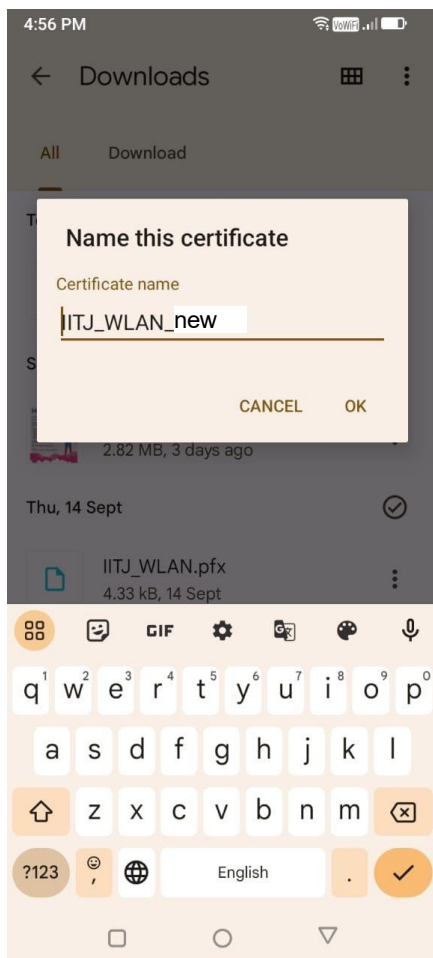
While installing it it will ask for the private key/password to extract. Use **iitj** as password and click on ok



Choose a certificate type as Wi-Fi certificate and click on ok.



Provide the name to this installed certificate i.e. IITJ\_WLAN\_new and click on ok.



Now go to your phone settings >> Wi-Fi >> From available Wi-Fi network page select IITJ\_WLAN and insert the following details.

EAP method: PEAP

Phase 2 authentication: MSCHAPV2

CA Certificate: IITJ\_WLAN

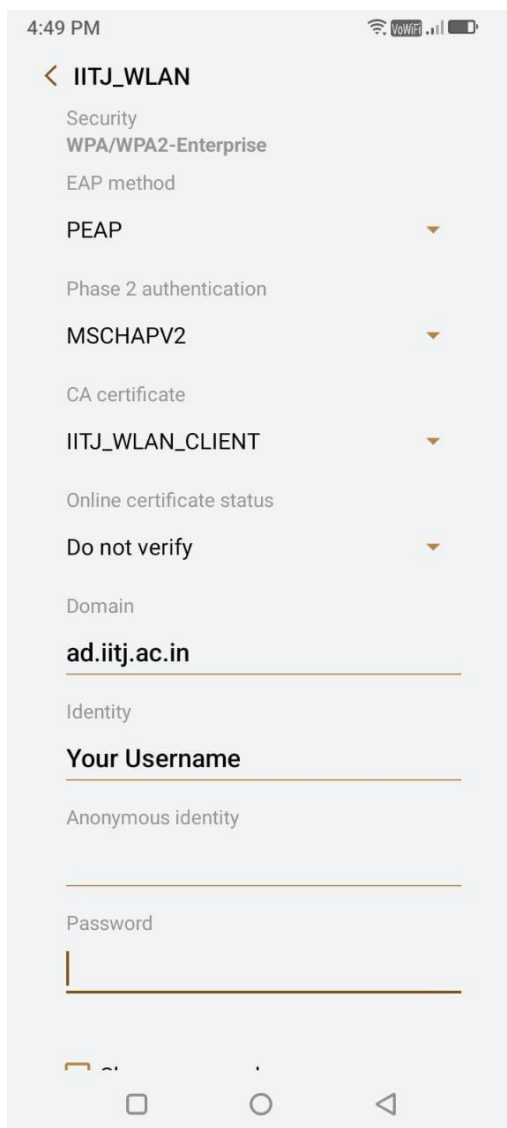
Online certificate status: do not verify or request certificate status

Domain: ad.iitj.ac.in

Identity: (Internet access ID)

Anonymous ID: Keep it blank or delete the anonymous

Password: (Internet access password)



At last, click on the connect to access the internet.